



Black 300w Ceramic Lighting Resistor

GRWAY Black 230V 300W ceramic lighting Resistor is widely used in biomass burning system, esp. in pellet stoves and barbecue grills. It has a high efficiency(more than 90%) of ignition and very easy to install before operating. These are related to the Black 300w Ceramic Lighting Resistor news, in which you can learn about the updated information in Black 300w Ceramic Lighting Resistor, to help you better understand and expand Black 300w Ceramic Lighting Resistor market.

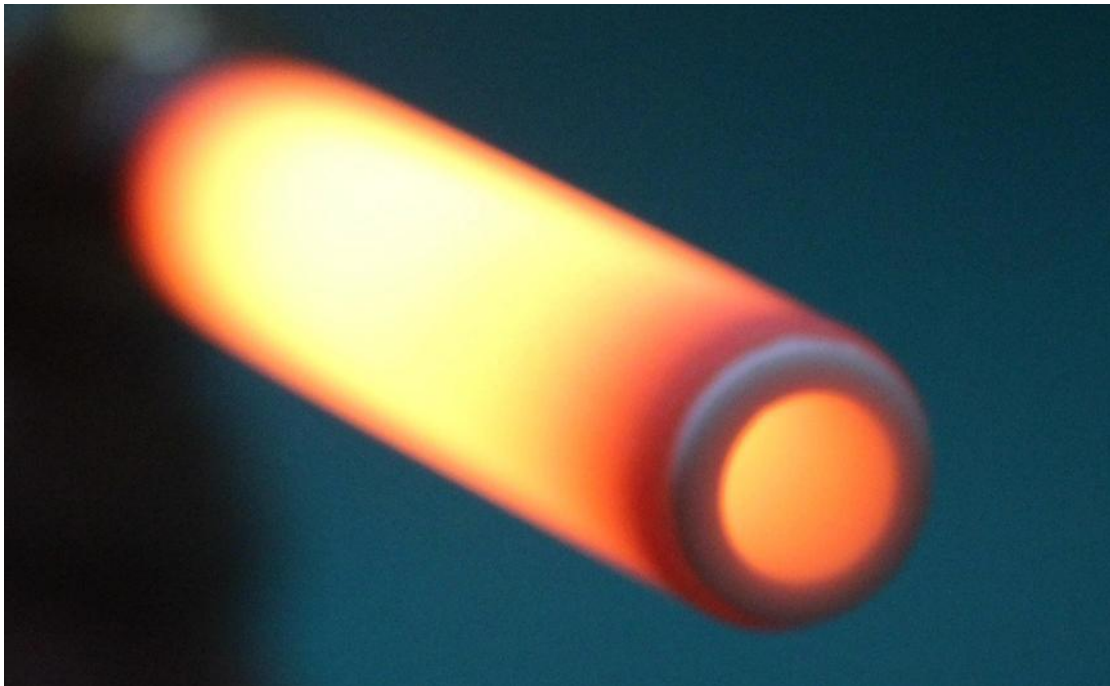
Model:300W Black

Black 300W Ceramic Lighting Resistor

GRWAY **Black 230V 300W ceramic lighting Resistor** is widely used in biomass burning system, esp. in pellet stoves and barbecue grills. It has a high efficiency(more than 90%) of ignition and very easy to install before operating.

- Wood pellet stove •Wood pellet boiler
- Wood pellet burner •Wood chips burner
- Straw burner •Other biomass burner

Ceramic lighting resistor for pellet stoves, designed to light pellets and wood chips for stoves boilers and burners.



More Details of Black 300W Ceramic Lighting Resistor

Ceramic Flange/copper thread fixing,

Dimension:11.55mm diameter, 113mm total length, 78mm up to screw length,

Max working temperature 970°C.

Power:300Watt,

Welcome to contact us directly for more details

Features of 300W Ceramic Lighting Resistor

High power density, excellent thermal efficiency

Rapid heating, non-hot spot temperature distribution

High temperature, small size, light weight

Excellent insulation

High reliability, stable resistance, no electric noise

Good chemical resistance

full compliance with EU RoHS (no lead, cadmium, mercury, hexavalent chromium, PCBS, and other harmful substances)



Black 300W Ceramic Lighting Resistor Warranty

18 months Warranty for the Ceramic Igniter(from the date of shipping)

Greenway will replace the failed heaters due to a defective design and production during the warranties.

For other matters:

Defects or damages resulting from any improper installation and using are not covered under the warranty.

Besides, we are also not responsible in the below cases:

- >Damaged during the transportation
- >Damaged during the natural disasters

